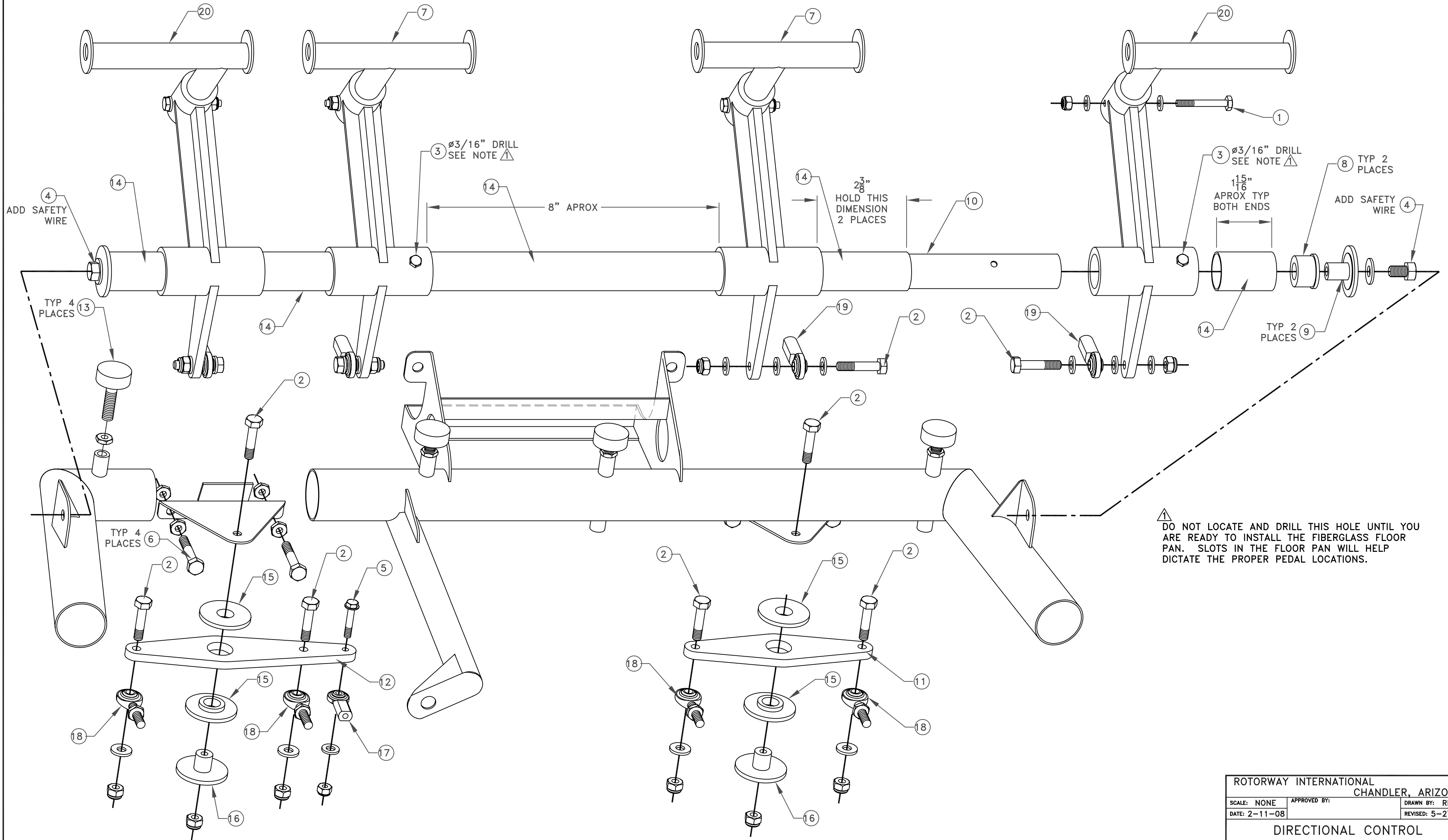


REF. NO.	PART NO.	PART NAME	QTY.
1.	E00-2490	BOLT AN3-14A 3/16 X 1-1/2.....	4
	E00-4301	WASHER 3/16 REGULAR AN960-10.....	8
	E00-3301	NUT 3/16 FIBERLOCK AN365-1032A.....	4
2.	E00-2406	BOLT AN4-11A 1/4 X 1-1/8.....	10
	E00-4401	WASHER 1/4 REGULAR AN960-416.....	20
	E00-3402	NUT 1/4-28 FIBERLOCK AN365-428A.....	10
3.	E00-2308	BOLT AN3-15A 3/16 X 1-5/8.....	2
	E00-4301	WASHER 3/16 REGULAR AN960-10.....	4
	E00-3301	NUT 3/16 FIBERLOCK AN365-1032A.....	2
4.	E00-2501	BOLT AN5H-4A 5/16 X 1/2 DRILLED HEAD.....	2
	E00-4501	WASHER 5/16 REGULAR AN960-516.....	2
		SAFETY WIRE	
5.	E00-2305	BOLT AN3-11A 3/16 X 1-1/8.....	1
	E00-4301	WASHER 3/16 REGULAR AN960-10.....	2
	E00-3301	NUT 3/16 FIBERLOCK AN365-1032A.....	2
6.	E00-2408	BOLT NAS428-4-14 1/4 X 1-1/2 FULL THD.....	4
	E00-3401	NUT 1/4 JAM AN316-4R.....	8

REF. NO.	PART NO.	PART NAME	QTY.
7.	E16-5100	FOOT PEDAL INBOARD.....	2
8.	E16-1190	NYLON PIVOT BUSHING.....	2
9.	E16-6131	CROSS SHAFT MOUNT BUSHING ALUMINUM.....	2
10.	E16-3101	FOOT PEDAL CROSS SHAFT.....	1
11.	E16-3150	SCISSOR BEAM (PASSENGER).....	1
12.	E16-3120	SCISSOR BEAM (PILOT).....	1
13.	E32-3150	BODY SUPPORT ADJUSTMENT PAD.....	4
	E00-3401	NUT 1/4 JAM AN316-4R.....	4
14.	E16-3110	FOOT PEDAL SPACER TUBE (CUT TO LENGTH).....	4
15.	E16-6120	NYLON SCOSSOR MOUNT BUSHING.....	4
16.	E16-6130	ALUMINUM SCISSOR MOUNT BUSHING.....	2
17.	E16-1200	3/16 FEMALE ROD END.....	1
18.	E16-1130	1/4 MALE ROD END.....	4
19.	E16-1140	1/4 FEMALE ROD END.....	4
20.	E16-9020	PEDAL WELDMENT (OFFSET).....	2



⚠ DO NOT LOCATE AND DRILL THIS HOLE UNTIL YOU ARE READY TO INSTALL THE FIBERGLASS FLOOR PAN. SLOTS IN THE FLOOR PAN WILL HELP DICTATE THE PROPER PEDAL LOCATIONS.

ROTORWAY INTERNATIONAL CHANDLER, ARIZONA			
SCALE: NONE	APPROVED BY:	DRAWN BY: RMR	
DATE: 2-11-08		REVISED: 5-27-08	
DIRECTIONAL CONTROL			
MODEL: A600 TALON	DRAWING NUMBER: E16-2000		